

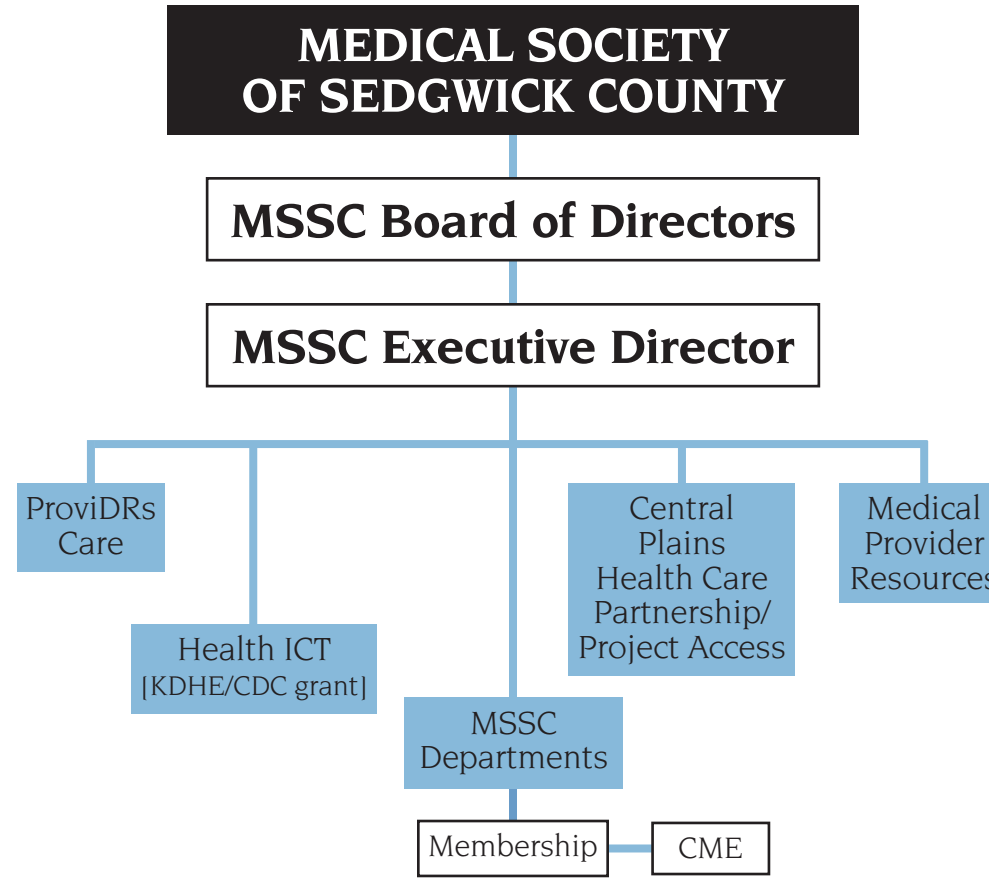
WHAT WE DO

The Medical Society of Sedgwick County counts over 1,200 physicians as members — more than 90% of doctors practicing in Sedgwick County. Founded in 1903, MSSSC is considered one of the most active county medical societies in the country.

MSSSC physicians are engaged in programs and initiatives that address issues affecting the health of people living in Wichita and Sedgwick County:

WHO WE ARE

- **Project Access** – coordinates health care access for the uninsured.
- **Central Plains Health Care Partnership** – administers non-profit programs including Project Access.
- **ProviDRs Care** – manages the only physician-owned Preferred Provider Organization in Kansas (formerly known as WPPA, Inc.).
- **Medical Provider Resources** – operates centralized physician and allied health staff credentialing verification services and delivers other support services.
- **Health ICT** – implements a federal grant on behalf of KDHE to improve the rate of obesity, diabetes, stroke and heart disease in Sedgwick County.
- **Kansas Sports Concussion Partnership** – works to deliver accurate information about sports-related concussions for physicians, coaches and the public.
- **Wichita Quality Health Collaborative** – seeks to improve the quality of in-patient and out-patient care in Sedgwick County in a coordinated manner.
- **Maternal Infant Health Coalition** – works to improve maternal and infant health outcomes in Sedgwick County.
- **Transportable Physician Orders for Patient Preferences** – translates treatment preferences of chronic or terminally ill patients into medical orders.
- **Sedgwick County EMS System** – oversees medical protocols and quality.
- **Medical Careers Loan Fund**
- **Legislative monitoring**



Other MSSC Activities

- EMSS Medical Protocols
- Kansas Sports Concussion Partnership
- Maternal Infant Health Coalition
- Safe Sleep Physician Task Force & Baby Talk
- TPOPP-Wichita
- Wichita Quality Health Coalition
- Surgical Safety / Time-Out Committee
- MSSC Annual Roster
- MSSC News
- Membership Meetings
- Patient Referrals
- MSSC Website
- MSSC Alliance
- KMS & AMA programs

Committees & Commissions

- EMS Physicians Advisory Committee
- EMS Trauma Subcommittee
- Judicial & Business Commission
- Legislative Committee
- Medical Careers Loan Fund Committee
- Membership & Ethics Committee
- Professional Investigation Committee

BROCHURE 2018

MSSSC

MEDICAL SOCIETY of SEDGWICK COUNTY

Physicians who care for...
our patients,
our community,
our profession.



1102 S. Hillside
Wichita, KS 67211
TEL 316-683-7557
FAX 316-683-1606
www.mssconline.org

PRESIDENT



Jed Delmore, MD, is a board-certified gynecologic oncologist, practicing in Wichita since 1985. A graduate of Texas A&M University and Baylor College of Medicine, Dr. Delmore did his Ob-Gyn residency at Wesley Medical Center and the University of Kansas School of Medicine-Wichita. He completed

his gynecologic oncology fellowship at M. D. Anderson Cancer Center in Houston. He is a professor of obstetrics and gynecology at KUSM-Wichita and practices at Associates in Women's Health. Dr. Delmore and his wife, Paula, have a daughter Rachel, son-in-law, Kyle, and grandson, Hugo. They enjoy travel, collecting wine and babysitting Hugo, not necessarily in that order.

CONTACT INFORMATION:

TEL: 316-219-6777 CELL: 316-650-9765
FAX: 316-219-6778
3232 E. Murdock, Wichita, Ks. 67208
EMAIL: jdelmore@awhobgyn.com

OFFICERS &
BOARD MEMBERS

- Michael Lievens, MD
President Elect
- Jason Taylor, MD
Secretary
- John H. Lohnes, MD
Treasurer
- Denis Knight, DO
Immediate Past President
- Therese Cusick, MD
- Jeffrey S. Davis, MD
- Tana Goering, MD
- Larry R. Hund, MD
- E. Jeanne Kroeker, MD
- Zachary C. Kuhlmann, DO
- Jany Moussa, MD
- Krista E. Shackelford, MD
- Diane Steere, MD

EXECUTIVE DIRECTOR



Phillip Brownlee became MSSC executive director in May 2017. He worked for 21 years at The Wichita Eagle, including 16 years as editorial page editor. During his Eagle tenure, Brownlee and the editorial board won numerous journalism awards, including the Kansas Public Health Association service award. Brownlee also

worked previously as a certified public accountant in Dallas and as a public information director. He and his wife, Laila, have two grown children.

CONTACT INFORMATION:

TEL: 316-683-7558 CELL: 316-680-9701
FAX: 316-683-1606
EMAIL: phillipbrownlee@med-soc.org
denisephillips@med-soc.org

Central Plains Health Care Partnership MSSC established this nonprofit organization in 1999 to oversee the operations of Project Access and other not-for-profit activities.

Continuing Medical Education MSSC has earned the capability to deliver CME credit for occasional MSSC events and programs.

Disability and Long-Term Care Insurance MSSC offers members discounted disability insurance and long-term care insurance policies.

Malpractice Insurance Connection Membership in Kansas Medical Society (KMS) and MSSC enables physicians to obtain liability coverage from the Kansas Medical Mutual Insurance Company (KaMMCO), KMS's physician-owned malpractice insurance company.

Medical Careers Loan Fund The fund provides medical, nursing and other allied health students from Sedgwick County with financial assistance to obtain their medical educations. The loans are for up to \$6,000 a year and are interest-free or low interest. To learn more, go to mssconline.org and click on "About" and then on "Medical Careers Loan Fund."

Medical Provider Resources MPR supports health care providers, group practices, facilities and networks by responding efficiently to the growing demands for credentialing requirements. MPR verifies the credentials of physicians and allied health practitioners seeking membership and/or privileges at participating hospitals or medical facilities at the time of initial application, reappointment or re-credentialing. Providers complete only one standard application, resulting in a reduction of paperwork. Other services available include provider enrollment with insurance plans and Medicare/Medicaid, Kansas licensure renewal, DEA registration or renewal, and recruitment credentialing.

Medical Student Emergency Loan Fund The fund was created in 1992, with the assistance of the MSSC Alliance, to provide financial assistance to medical students in need of a short-term, emergency loan. Interest-free loans up to \$500 are made for a period of 90 days.

MSSC Legislative Committee This committee works closely with MSSC's executive director and KMS staff to continuously monitor legislative issues related to the practice of medicine in Kansas. The committee regularly communicates its positions and concerns to the Sedgwick County Legislative Delegation.

MSSC Meetings Held four times a year, membership meetings provide networking opportunities and informative presentations.

MSSC Membership Roster Physician members are listed in the annual membership roster alphabetically, by their ABMS-recognized specialty and by practice group. The MSSC Roster is distributed each year to MSSC members, Kansas hospitals and most KMS members and sold to pharmacists, labs, long-term care facilities, etc.

MSSC Alliance Founded in the 1920s by spouses of physicians to support the society and its activities, the Alliance coordinates programs contributing to the quality of life and health in the county.

MSSC NEWS The Medical Society utilizes its monthly MSSC News to distribute information of interest and importance to Sedgwick County physicians – via mail or email.

MSSC Website The MSSC's website — www.mssconline.org — includes a Physician Finder option, the latest news, a calendar, links to MSSC's affiliates and information about community-oriented initiatives MSSC supports.

Patient Referral Service In response to public requests for referrals, physician names are provided on a rotating basis by specialty.

Pharmacy Information Reporting Program Organized in 1992, this program facilitates information between pharmacists and physicians to help prevent attempts to fraudulently acquire controlled drugs.

Project Access This nationally recognized program was initiated by MSSC in 1999 and developed through a community coalition to address the needs of low-income uninsured residents of Sedgwick County. More than half of all MSSC members participate in this physician-led program that efficiently coordinates donated medical care and services provided by physicians, hospitals, pharmacies and other providers. Community partners include United Way of the Plains, Ascension Via Christi, Wesley Medical Center, KU School of Medicine-Wichita Residency Clinics, Kansas Department for Children and Families, Wichita City Council, Sedgwick County Commission, pharmacists, dentists, ancillary health care providers and community care clinics.

ProviDRs Care The only physician-owned PPO in Kansas (formerly WPPA, Inc.) is a managed health care preferred provider network. Providers and hospitals throughout Kansas and adjoining states offer services through ProviDRs Care Network to self-funded groups, fully insured businesses, insurance companies and third-party administrators. ProviDRs Care physicians and staff will be introducing in 2018 a value-based health care delivery model aimed at better health, better care, lower cost and enhanced physician satisfaction.

